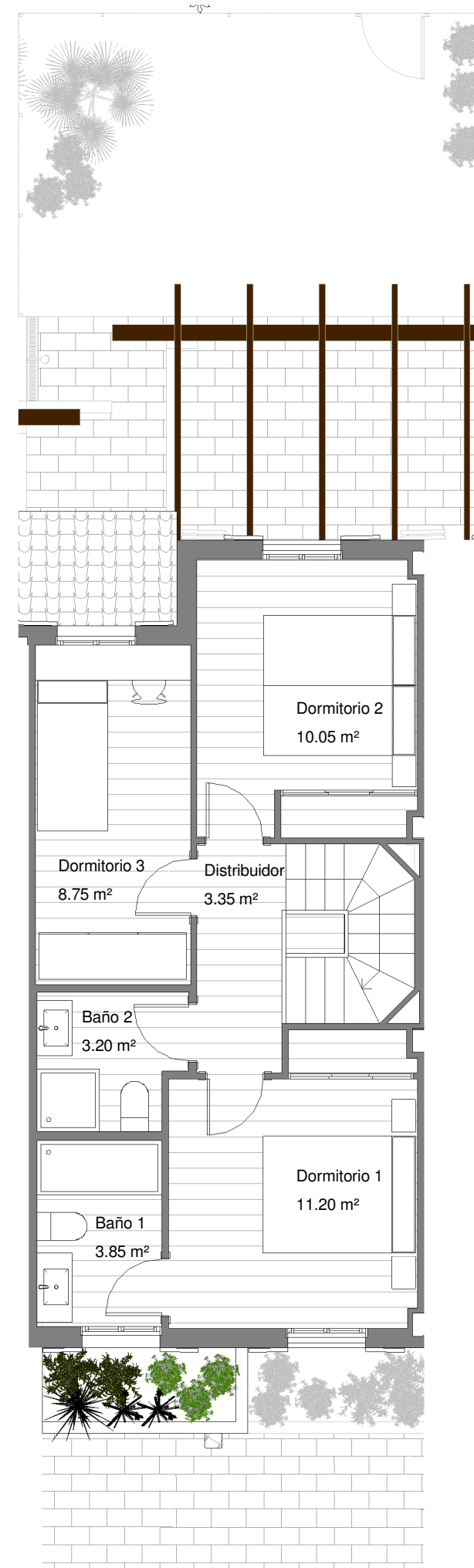
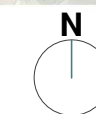


Planta Baja



Planta Primera



RESIDENCIAL PORTA ALCALA PLACE

SUPERFICIES TOTALES

SUP. ÚTIL INTERIOR	85.10 m ²
SUP. ÚTIL EXTERIOR	44.40 m ²
SUP. ÚTIL TOTAL	129.50 m ²

DATOS DE VIVIENDA

BLOQUE	1
CASA	5
ESCALA	1/75

