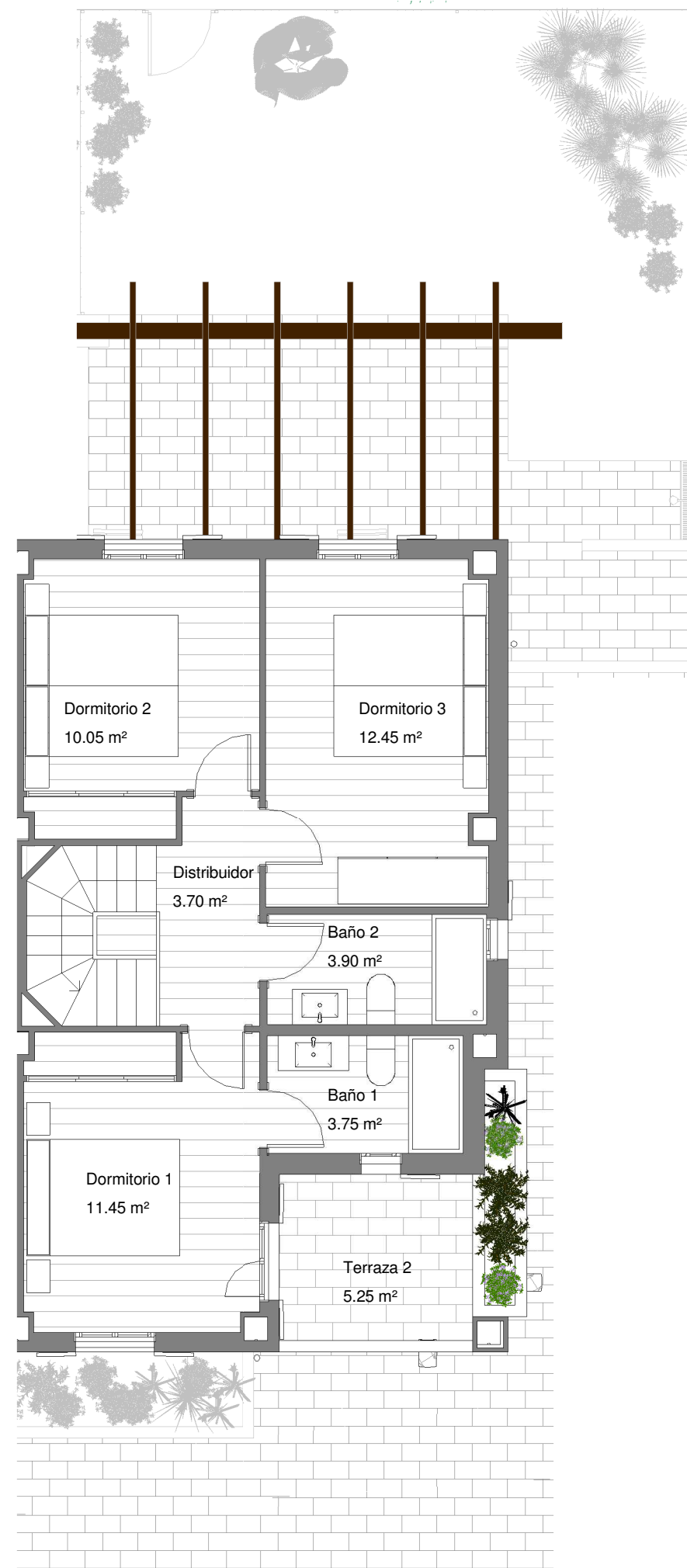
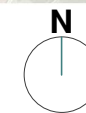


Planta Baja



Planta Primera



## RESIDENCIAL PORTA ALCALA PLACE

### SUPERFICIES TOTALES

SUP. ÚTIL INTERIOR	95.45 m <sup>2</sup>
SUP. ÚTIL EXTERIOR	67.35 m <sup>2</sup>
SUP. ÚTIL TOTAL	162.80 m <sup>2</sup>

### DATOS DE VIVIENDA

BLOQUE	1
CASA	6
ESCALA	1/75

