

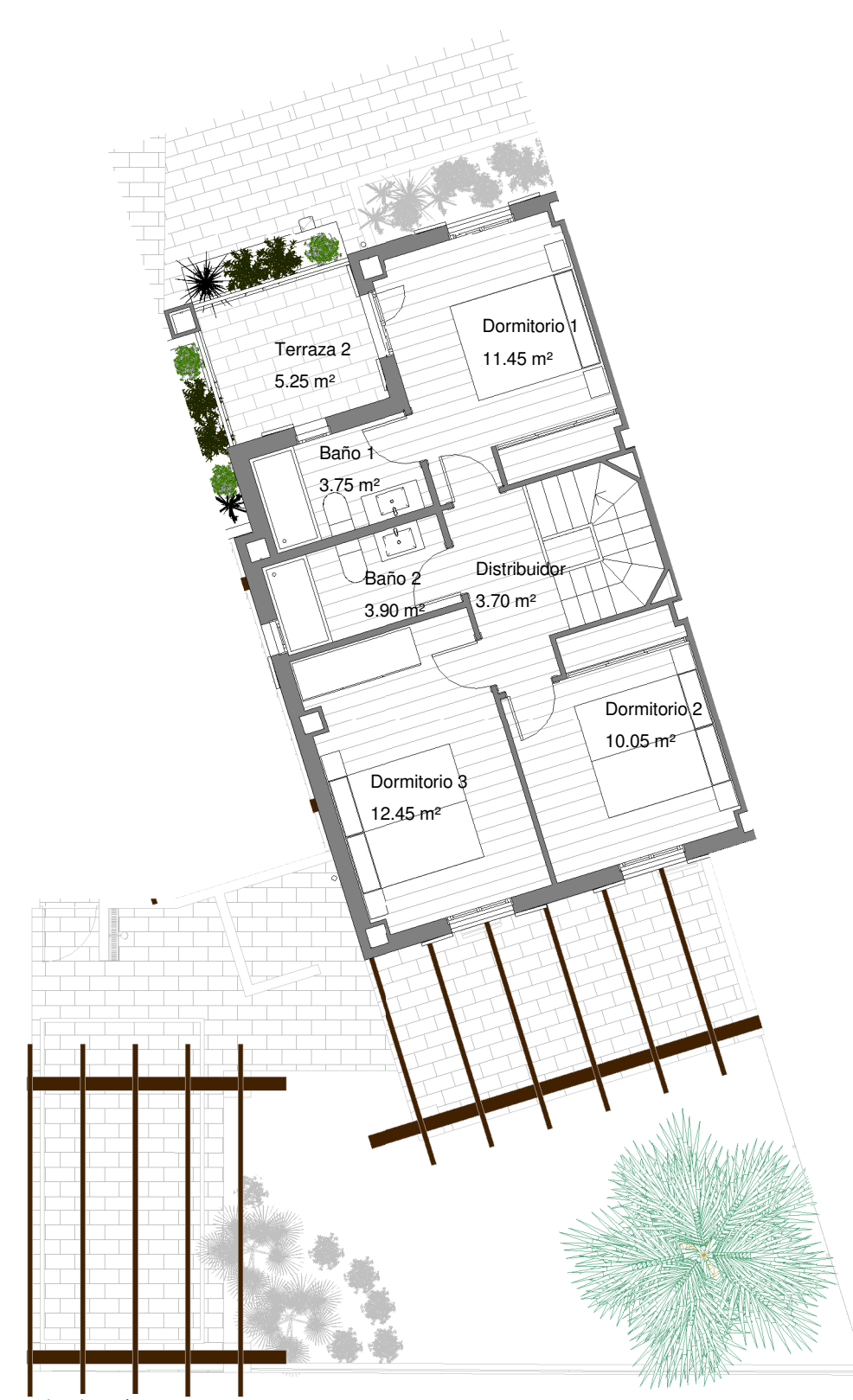
RESIDENCIAL PORTA ALCALA PLACE

SUPERFICIES TOTALES

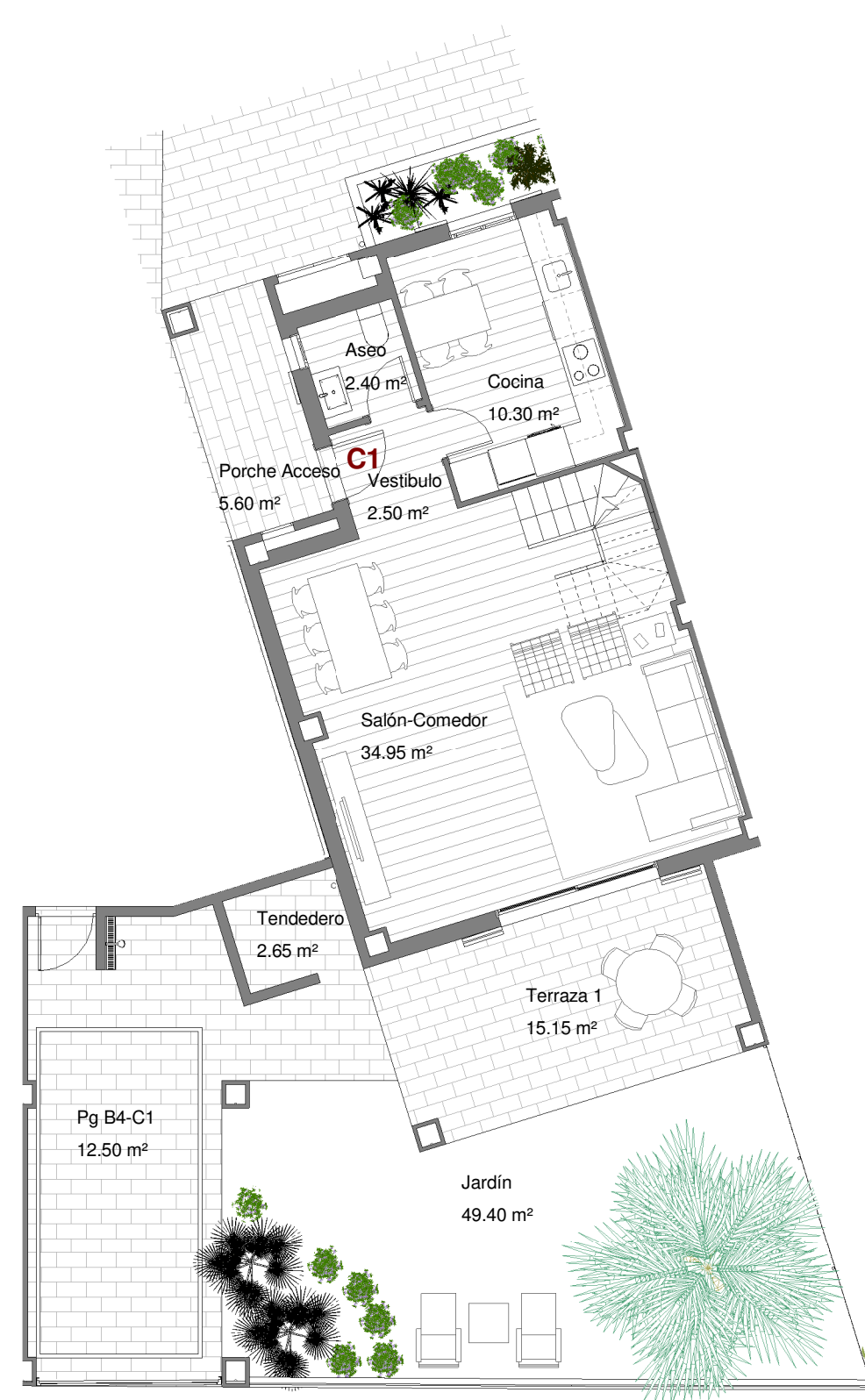
SUP. ÚTIL INTERIOR	95.45 m ²
SUP. ÚTIL EXTERIOR	90.55 m ²
SUP. ÚTIL TOTAL	186.00 m ²

DATOS DE VIVIENDA

BLOQUE	4
CASA	1
ESCALA	1/100



Planta Primera



Planta Baja

