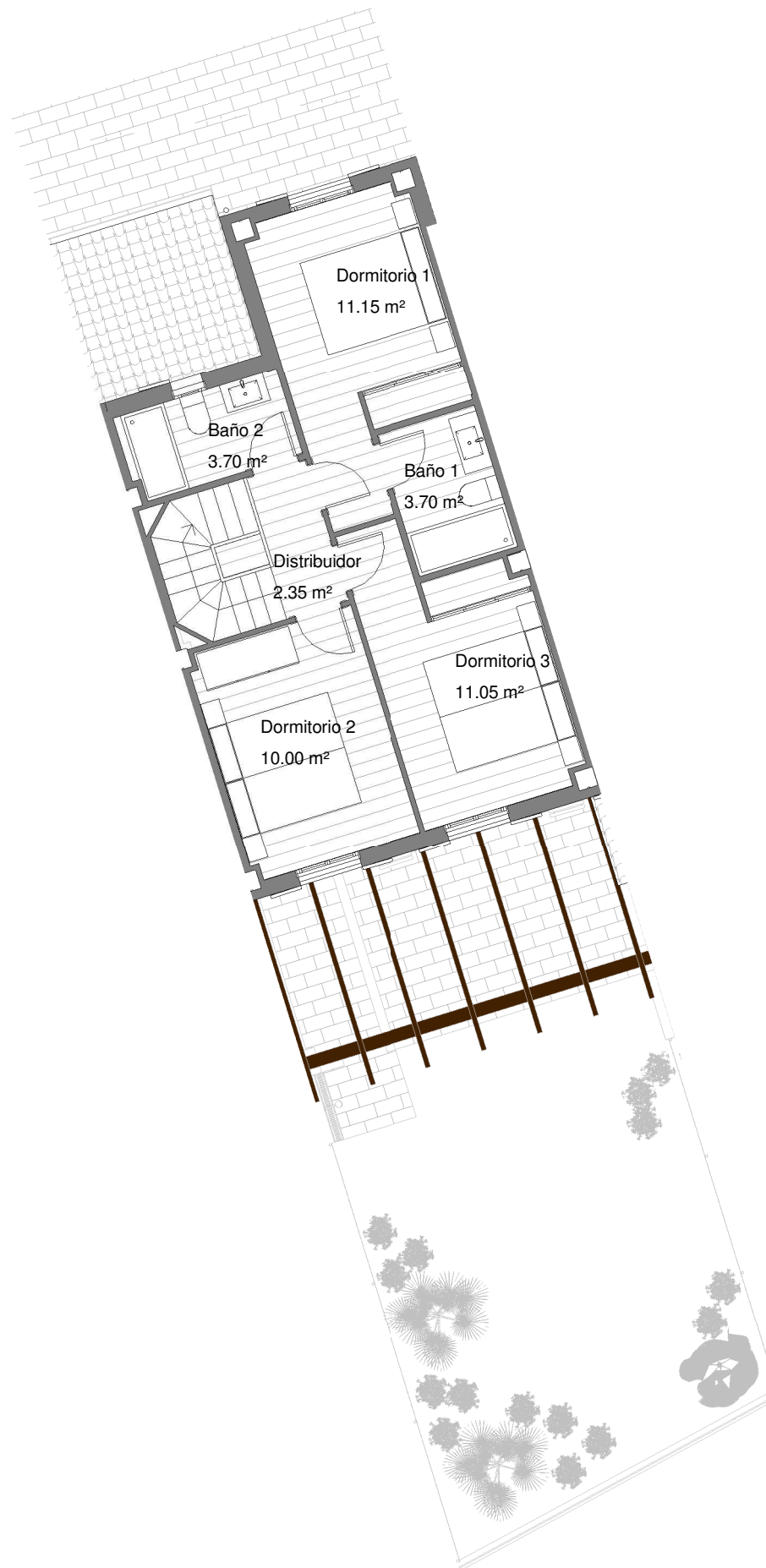
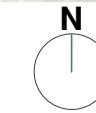




Planta Baja



Planta Primera



RESIDENCIAL PORTA ALCALA PLACE

SUPERFICIES TOTALES

SUP. ÚTIL INTERIOR	89.20 m ²
SUP. ÚTIL EXTERIOR	60.45 m ²
SUP. ÚTIL TOTAL	149.65 m ²

DATOS DE VIVIENDA

BLOQUE	4
CASA	4
ESCALA	1/100

