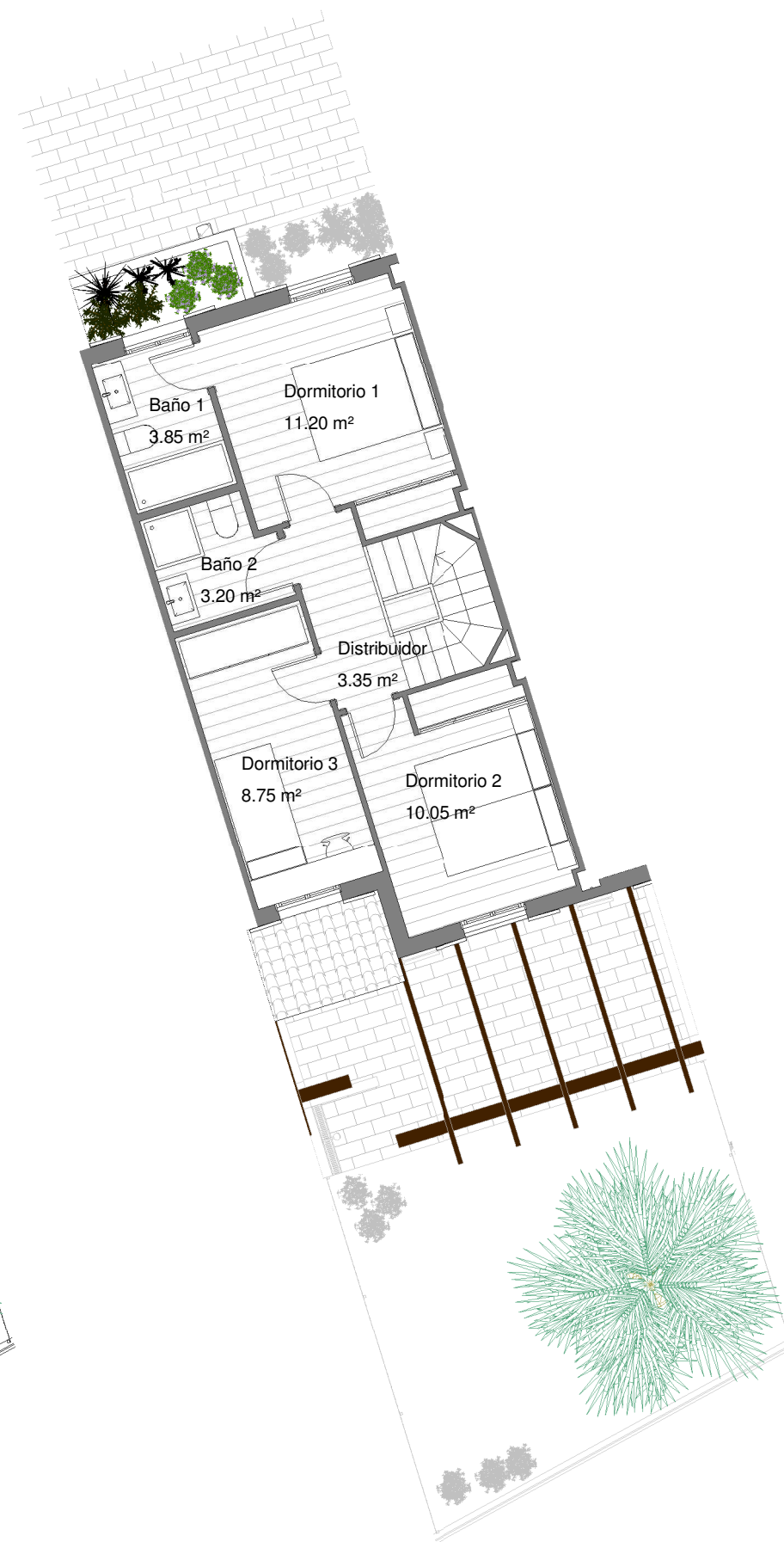
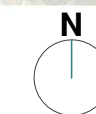


Planta Baja



Planta Primera



RESIDENCIAL PORTA ALCALA PLACE

SUPERFICIES TOTALES

SUP. ÚTIL INTERIOR	85.10 m ²
SUP. ÚTIL EXTERIOR	51.70 m ²
SUP. ÚTIL TOTAL	136.80 m ²

DATOS DE VIVIENDA

BLOQUE	4
CASA	5
ESCALA	1/100

